



Loewe **klang sub1**

Subwoofer to complement the TV

Active wireless subwoofer for the living room

160 watts total music power with two active 4" drivers and four passive 4" radiators

Hexagonal, point-symmetrical design for compensation of moving masses

360° design with painted acrylic glass plate and special acoustic fabric

Absolutely free of vibration and oscillation

Perfect match for any stereo TV set with variable line-out

Bluetooth with Qualcomm aptX Low Latency

High quality and latency-free wireless signal transmission



LOEWE. was found by the Loewe brothers as Radio Frequenz GmbH in Berlin in 1923.

Today we still design, develop and produce consumer electronics – Made in Germany.

bild – is the German word for picture or image.

klang – is the German word for sound or tone.

Data sheet

Loewe **klang sub1**

March 2024

LOEWE.

www.loewe.tv



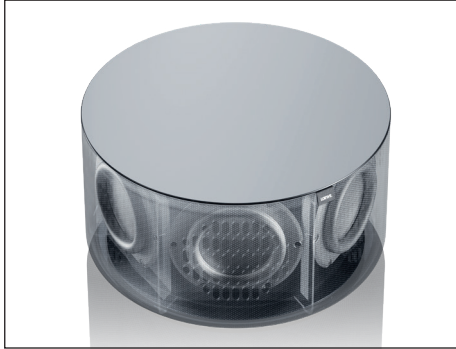
Loewe **klang sub1**

Active wireless subwoofer to complement the TV



Strong companion.

Loewe klang sub1 fits perfectly with all Loewe TV sets and can be connected wirelessly via the transmitter with any TV model - also from any other manufacturer - with variable audio line out, in order to upgrade from stereo to a 2.1 sound solution setup.



Powerful sound.

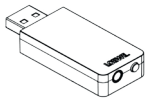
The arrangement of two 4" active drivers and four 4" passive radiators with 160 watts total music power create a perfect bass foundation for the TV integrated stereo speakers.




Premium design.

High-quality, selected materials, the special acoustic fabric as well as the cover plate made of lacquered acrylic glass ensure the sophisticated and elegant look.

klang sub1 transmitter



Colour

 basalt grey

Model

klang sub1

Article

60610

Achievements



“The bass speaker serves its purpose, small screens gain power and volume.”

Frankfurter Allgemeine Zeitung,
1. November 2022 about klang sub1

Loewe **klang sub1**

Active wireless subwoofer to complement the TV



Qualcomm® aptX®
low latency



All product and company names are trademarks™ or registered® trademarks of their respective holders. Use of them does not imply any affiliation with or endorsement by them.

Technical data

Loewe klang

sub1

Audio (acoustic)

| | |
|---|------------------------------|
| Frequency range (Hz) @ ffl3 dB | 40-100 |
| Orientation front / side / up / rear firing | radial (motion compensation) |
| Acoustic speaker concept | closed + passive membranes |
| Channel configuration (speaker layout) | 0.1 (subwoofer) |
| Driver total amount | 6 |
| Driver active | 2x 4" |
| Driver passive | 4x 4" |
| 2-channel crossover | ● low pass |

Audio (electric)

| | |
|--|-------------------------|
| Frequency range (Hz) @ ffl1 dB | 40-100 |
| Class-D amp | ● |
| Power (watts sine / music) | 80 / 160 |
| Total harmonic distortion @ 1 watt / 10 watts | < 0,5 |
| Dynamic range / Signal to noise ratio (dB) | 24 bit / > 80 |
| Bass and treble control / loudness | ● (gain adjustment) / — |
| Balance / gain adjustment (dB) | — / ● (via volume knob) |
| Protection circuit: heat / current / voltage / short cut | ● / ● / ● / ● |

Media and reception

| | |
|----------------------------------|------------------|
| Multiroom audio support | — |
| Multichannel home cinema support | ● (stereo + sub) |

Connectivity and interfaces

| | |
|--|----------------------|
| Bluetooth | ● (aptX Low Latency) |
| Wireless Digital Audiolink (second generation) | — |
| Analogue audio jack in (3.5 mm stereo) | ● |

Network and formats

| | |
|---------------------------|-----------------|
| Bluetooth standard | 5.0 |
| Bluetooth power (max. mW) | <10 |
| Bluetooth frequency range | 2,4 GHz |
| Bluetooth protocols | A2DP SNK, AVRCP |

Energy and environment

| | |
|--|--------------------|
| Mains voltages AC | 100-240V, 50/60 Hz |
| Power consumption eco standby mode (watts) | 0,5 |
| Power consumption network standby mode (watts) | — |
| Ambient temperature while in operation | 5-35° C |
| Relative humidity (non-condensing) | 20-80% |

Dimensions

| | |
|-------------------------|--------------------|
| Weight (approx. kg) | 4,6 |
| W* x H x D (approx. cm) | 28,7 x 15,8 x 28,7 |

Scope of Delivery

| | |
|---------------------|-------------|
| Manual / power cord | ● / ● |
| Others | transmitter |

Optional accessories

| | |
|--|---------------------------------|
| Selection of recommended setup solutions and audio systems | bild v, bild i, bild c, We, SEE |
|--|---------------------------------|

● = available, ○ = optional, — = not available

Technical changes and delivery options are subject to change without notice. The product portfolio may be different and might vary depending on the country. Service matters are all handled individually.

Data sheet

Loewe **klang sub1**

March 2024